
Autobahn DX 5.0

Quick Start Guide



Version 5.0
September 2019

CONTENTS

- 1 AUTOBAHN DX QUICK START2**
- 1.1 THE QUICK JOB TAB 2
- 1.2 THE JOB MANAGER TAB 3
- 1.3 THE DESIGNER TAB 4
 - 1.3.1 *General Job Properties* 4
 - 1.3.2 *Scheduling a job* 5

1 AUTOBAHN DX QUICK START

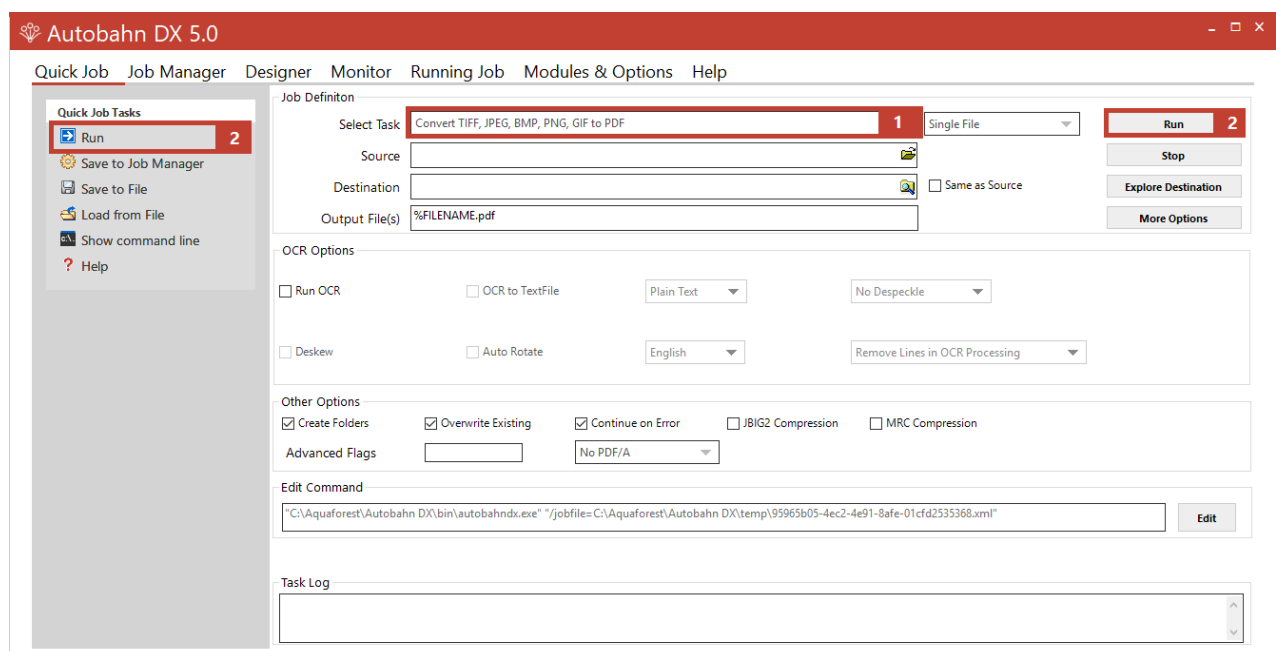
Autobahn DX is designed to allow the definition of document processing jobs (“Job Definitions”) and then scheduling them to run continuously on watched folders or on a daily scheduled basis. The annotated screenshots in this section are designed to enable rapid familiarization with the product.

This document is intended as a quick start guide, introducing the concepts and operation of Autobahn DX. For more detailed information, please see the Autobahn DX Reference Guide.

<https://aquaforest.azureedge.net/downloads/files/AutobahnDX5.0.pdf>

1.1 The Quick Job Tab

The product also allows “Quick Jobs” to be defined and run interactively which provides a convenient method for testing the product’s capabilities and running simple jobs.

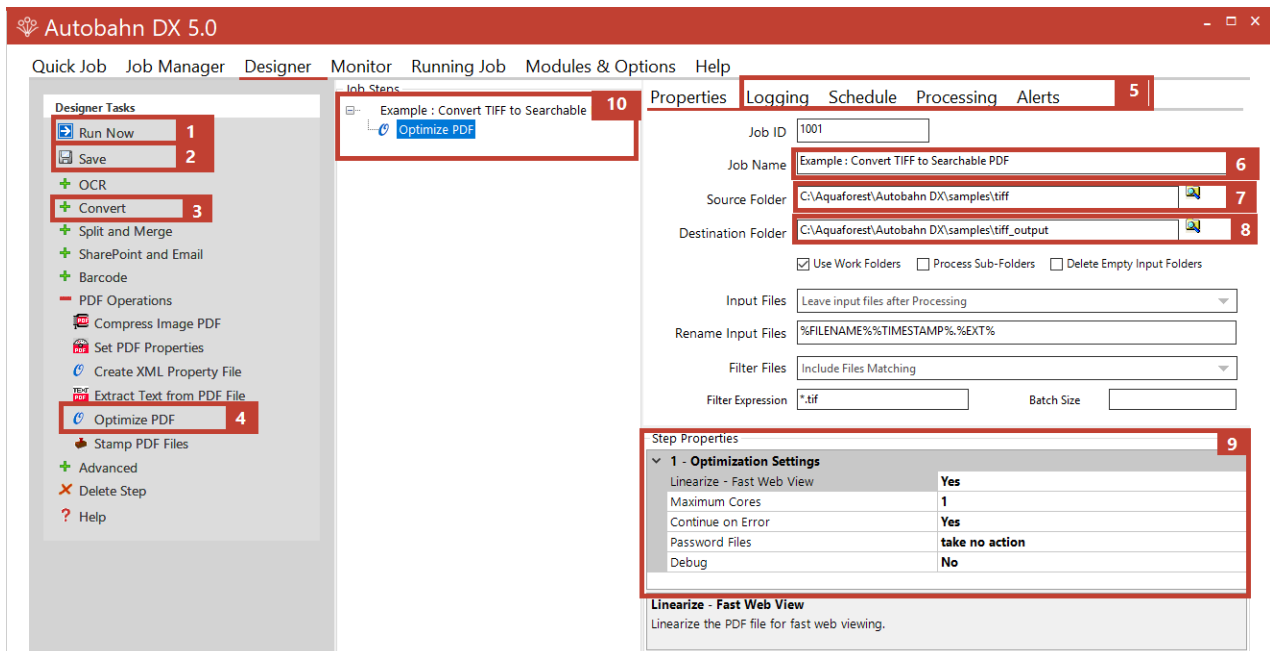


1. Use the “**Select Task**” Combo Box to choose an operation you want to run.
2. Use the “**Run**” Button to run these tasks

1.3 The Designer Tab

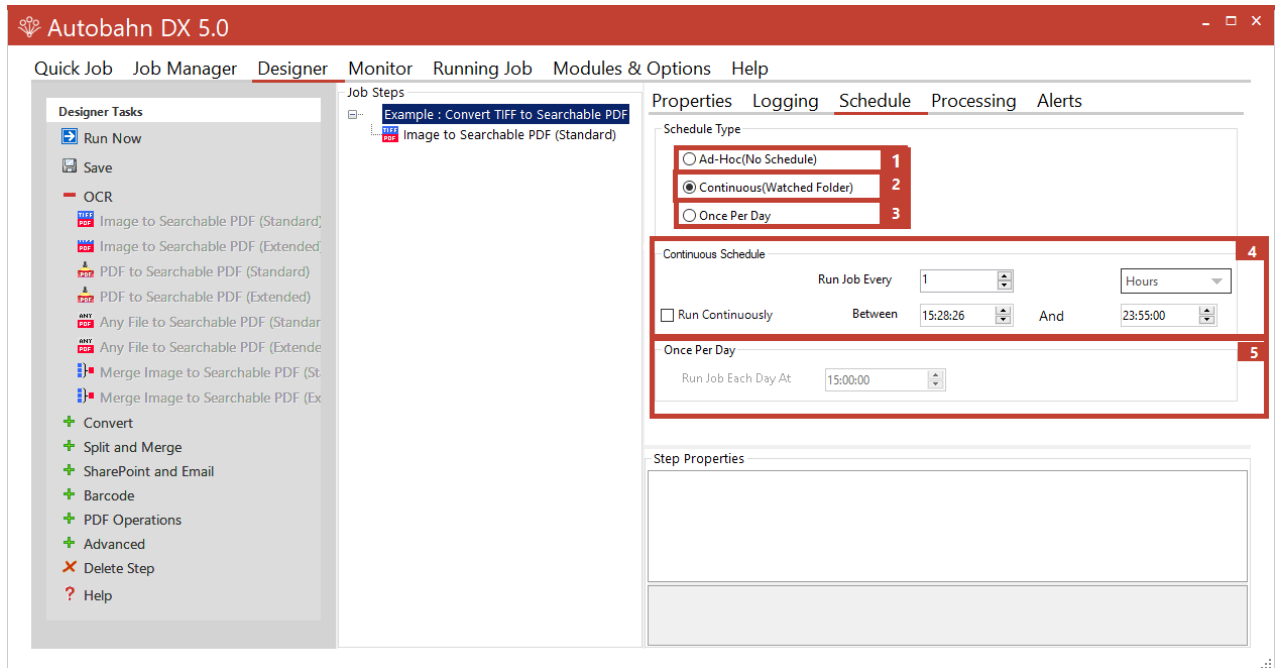
This section will give you a brief overview of the job designer and how jobs are created.

1.3.1 General Job Properties



1. Click the **“Run Now”** Button to run a job that has been created.
2. Click the **“Save”** Button to save any changes made to a job.
3. We arranged similar Operations/Tasks into groups with a **“+”** Button in front of the header name. Click the **“+”** Button to expand the steps under the group.
4. Click on the **“Task”** you want to add to the job and it will show up in the **“Job Steps”** box, one job can have multiple steps, i.e. the output of the first step will be input in the second step.
5. Switch between the tabs to edit the advanced settings in the job.
6. Edit the Job Name using the **“Job Name”** text box.
7. Set the **Source Folder** here.
8. Set the **Destination Folder** here.
9. Set the **Step Properties** (These are the properties of the operation you selected in point 4) here.
10. You can select a step in the **“Job Steps”** list to edit the steps, change its position and delete the step.

1.3.2 Scheduling a job



1. Choose this option to run the job manually.
2. Choose this option to run the job **Continuously** between a time range.
3. Choose this option to run a job **Once Per Day** at a certain given time.
4. Set the properties for the **Continuous** schedule option here.
5. Set the properties for the **Once Per Day** schedule option here.